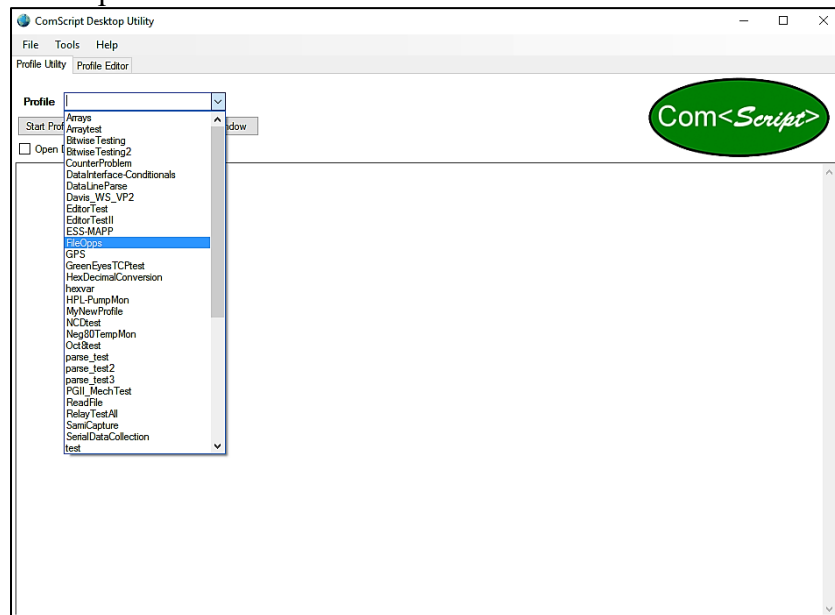


1. Download ComScript package: Download the ComScript.zip file from <http://gescience.com/comscript/>. Be sure you choose the right version of ComScript for your PC. When you have located ComScript.zip, right click on the file, select “extract all” and then choose the appropriate location on your PC to extract the package to (e.g. c:\, d:\LabSystems\, etc.). ComScript does not need to be installed into your Program Files folder so you can unzip the package to any drive where you would like to run ComScript. Feel free to put copies of ComScript in more than one place on your PC if you have distinct jobs, but do not run more than one instance of ComScript at a time or they may conflict.

2. Running ComScript/Licensing: To open ComScript, double click the ComScript GUI application file in the ComScript folder. ComScript will open to the licensing window. Click the “generate your unique key” button on the trial page, then send the result to info@gescience.com with the title – “ComScript Activation”. We’ll reply you within 5 business days and send you the registration key. When you get the key, paste it into the registration key box at the bottom and click “Register”. To start your 30 day trial, simply click the trial button and check the box to accept the license agreement.

3. Run example profiles: Select one of the example profiles listed below (DataInterface-Conditionals or Math are good first profiles). These examples profiles are included in the ExampleProfiles.zip folder, which is also available for download on the same website. When downloaded, extract the zip folder and put the sub-folder “profiles” in the ComScript folder on your PC. Run the example profiles through the ComScript window, find the profile dropdown list and click the “start profile” button.



- **DataInterface-Conditionals** – Looping profile that allows the user to set values and a threshold in the Data Interface**. The values can be evaluated with conditional expressions and the results are displayed in the Data Interface.
 - **FileOps** - Demonstrates file handling functions (e.g. copy, delete, etc.) and how to build the PC time and date into a file name.
 - **HexDecimalConversion** – Demonstrates how to convert hexadecimal (hex) values to decimal and decimal values to hex.
 - **Import** – Simple example of how to build a ComScript project by importing scripts from files other than profile.xml. Projects are useful ways to organize scripts when multiple scripts are used for large applications.
 - **Math** – A demonstration of how to evaluate mathematical expressions inside a while loop. Results and expressions are displayed in the Data Interface** and written to a file for review.
 - **DataLineParse:** Shows how to parse a line of data with various separators/delimiters into individual variables.
- ** **The Data Interface can be opened at the start of the profile execution or at any time via the tools menu.**
Only open one Data Interface at a time.

4. **View source code:** Open the profile editor under the tools menu or click the Profile Editor tab if

already open. Then click the open box in the editor and select the folder for the example profile you would like to view or edit. When inside the correct profile folder, double click the profile.xml file and the code will be opened in the editor. New commands can be added to scripts by selecting from the list on the left. The command will be written into the text page at the location of the cursor. **Edit attribute values** inside the quotation marks as necessary.

5. **Learn more:** Read through the manual (<http://comscriptmanual.gescience.com/>) to learn how to write powerful ComScript applications. The help menu on the ComScript Desktop application also includes a command reference with a brief description of all commands.

6. **Contact us** if you get stuck, or to tell us what you think of ComScript at comscript@gescience.com.